

Resilient Tile Care

High Gloss, Rapid Build, Outstanding Durability

Superior For Use in Scrub & Recoat and High Speed Burnishing Programs

This maintenance system was developed to provide superior performance in both scrub-and-recoat and high speed burnishing maintenance programs. Eliminator No-Rinse, Emulsifying Stripper has the power to dissolve any removable water-based sealer or finish, quickly and safely without leaving any stripper residue that requires rinsing. One application of Cutting Edge will easily convince the most discriminating floor care professional of the unparalleled performance of this finish. Durability is unrivaled due to Cutting Edge's harder energy-dissipating matrix. Designed for extreme traffic areas, maintained using high (1000-2000) Rpm electric and ultra-high 2000-3000 propane burnishing equipment.

Floor Preparation and Application Products

ELIMINATOR

Stripper For All Water-Based Sealers And Finishes

As Perma's most effective stripper, Eliminator rapidly dissolves multiple layers of floor finish, allowing, in some applications, for removal without the use of floor machines or stripping pads. Formulated almost completely from top quality water miscible solvents, Eliminator contains less than 1% solids at concentration, so it leaves no alkaline residue to adversely affect subsequent finish applications. No other stripper can surpass Eliminator for the removal of heavy build-ups of today's UHS and urethane fortified finishes. Years of buildup can be quickly and easily removed by light agitation with a scrubbing machine and standard stripping pad. Eliminator will even dissolve the almost impossible to remove straight acrylic sealers. Formulated for those floor care professionals whose time is at a premium, Eliminator is unrivaled in performance and value.



Product #118

CUTTING EDGE

**Extended Durability For Extreme Traffic Conditions
Formulated For Ultra High Speed Burnishing Programs**

Advances in acrylic, urethane, and cross-linking systems chemistry have made this revolutionary finish possible. One try of Cutting Edge will easily convince the most discriminating floor care professional of the unparalleled performance of this finish. Durability is unrivaled due to Cutting Edge's harder energy-dissipating matrix. Designed for extreme traffic areas and maintenance using high (1000-2000) Rpm electric and ultra-high-speed 2500-3000 propane burnishing equipment. When high speed burnished, Cutting Edge exhibits levels of gloss 30-40% higher than competitive high gloss floor finishes. With surface hardness 80-100% higher than previously attainable levels, resistance to traffic wear, scuffing, and black heel marks has been dramatically increased.



Product #30

Resilient Tile Care

Floor Preparation and Application Procedures

Step 1 - Strip Any Existing Finish With Eliminator

NOTE: Some adhesives used to install new vinyl tile floors can be effected by Eliminator. We recommend testing a small (12" x 12") area of floor at the dilution to be used, before stripping large areas.

Dilute 16 ounces of Eliminator (1:8) for routine stripping (1-10 coats), 32 ounces (1:4) for medium build-up (11-15 coats), 64 ounces (1:2) for heavy build up (15-25 coats) or 128 ounces (1:1) for severe build-up (25+ coats) per gallon of **COLD water only**. Apply stripping solution with a mop, and let it stand for five minutes. Removing heavy finish build-up may require scrubbing with a 175-300 Rpm buffing machine equipped with a black stripping pad. Remove the dissolved finish and solution with a wet vacuum. Any residual dissolved floor finish not removed by vacuuming should be removed by rinsing using an automatic scrubber or mop and wringer bucket containing 1/2 - 1 ounce per gallon of Tops or EM1005 Neutral Cleaner and water. Allow the floor to dry thoroughly before applying any of Perma's high quality finishes. **Eliminator is not recommended for use on Asphalt Tile or older Linoleum Tiles as it may remove the dye particularly from dark colored tiles.**



Step 2 - Apply 3-5 Coats of Cutting Edge Floor Finish

Optimum build and appearance require a minimum of 3-5 coats of finish. Apply Cutting Edge in thin, even coats using a clean finish mop or applicator. Allow 30-45 minutes between coats. Additional drying time may be necessary on cold floors or under high humidity conditions.

Gloss Maintenance and Restoration

Periodically Cutting Edge should be burnished with a 1000-3000 Rpm burnishing machine using Balance, floor finish burnishing treatment to enhance the floor appearance, increase slip resistance and extend the life of the finish.



Perma Incorporated • 605 Springs Road, Bedford, MA 01730

Tel: (978) 667-5161 • Fax: (978) 670-5797

E-mail: info@perma.com • Website: www.perma.com

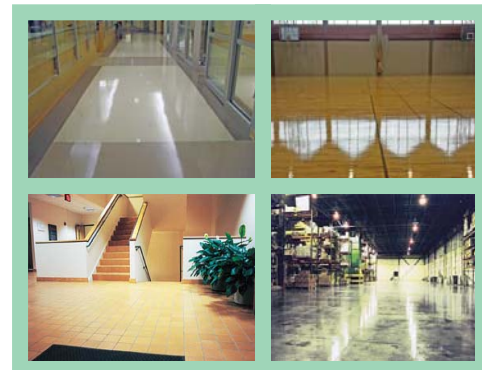
Resilient Tile Care

Maintenance and Gloss Restoration Products

AQUA-TREAT

Multi-Purpose, Water-Based, Dry Mop Treatment

Aqua Treat is a special water-based formulation for treating dust mops and cloths. Unlike oil-based treatments which can leave a film and cause separation, mottling, or adhesion problems with many floor coatings, Aqua Treat is 100% compatible with all modern floor-finishing materials. Aqua Treat will quickly penetrate dust mops and cloths, providing extended dust- and dirt-retention capabilities. Aqua Treat and soils can be easily removed from dry mops and cloths simply by washing with detergent and water. Aqua Treat may be safely used on asphalt, vinyl, asbestos, linoleum, terrazzo, marble, ceramic tile, sealed wood and concrete floors. Aqua Treat is nontoxic, nonflammable, noncorrosive, and biodegradable.

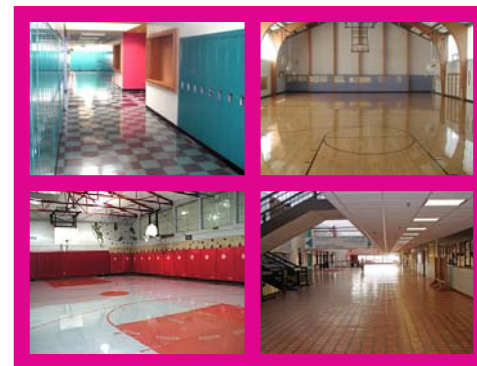


Product #135

TOPS

Premium Quality, Neutral Cleaner & Damp Mop

A highly effective, yet gentle, synthetic detergent concentrate, formulated for use in professional floorcare programs on all types of flooring surfaces including resilient tile, ceramic tiles, marble, terrazzo, synthetic gym flooring, sealed wood, cork, and as a general purpose cleaner. Strong enough to remove stubborn soil, it will not degrade or dull existing floor finishes. Chelating and sequestering agents neutralize and suspend troublesome salt and ice melters. When used to clean surfaces prior to recoating, with resilient tile or water-based wood floor finishes, Tops Neutral Cleaner reduces surface tension and neutralizes floor surfaces, allowing for better finish performance by assuring the floor meets acceptable pH parameters. This product also delivers superior performance as a general purpose cleaner for wall tiles, porcelain, plastics, chromium, and stainless steel.



Product #127

BALANCE

**Anti-Slip, Durability and Gloss Enhancing
Floor Finish Burnishing Treatment**

This revolutionary product increases the durability of vinyl composition tile finishes while at the same time increasing gloss and slip resistance. Any of Perma's high quality Floor finishes that are treated with Balance exhibit a truly brilliant gloss, slip resistance characteristics that exceed OSHA, Americans with Disabilities Act and National Floor Safety Institute recommendations and can experience a 50% or more increase in finish longevity.



Product #69



Perma Incorporated • 605 Springs Road, Bedford, MA 01730

Tel: (978) 667-5161 • Fax: (978) 670-5797

E-mail: info@perma.com • Website: www.perma.com

Resilient Tile Care

Maintenance and Gloss Restoration Procedures

Step 1- Dry Mop With A Mop Treated With Aqua Treat

Apply mop treatment to a clean mop at approximately one ounce per eight ounces of mop weight. Do not use this product on mops previously treated with oil-based mop treatments. Allow the mop to stand overnight before using it on floors. Shake mop thoroughly after use to dislodge loose dirt, and retreat as necessary. When a mop becomes dirty simply wash it with warm water and detergent, allow it to dry thoroughly and retreat it.



Step 2-Clean With Tops Neutral Cleaner

For daily damp mopping, mix 1/2-1 ounce of Tops per gallon of warm water, and apply using a cotton string mop and wringer bucket.

For heavily soiled floors, mix 2-4 ounces per gallon of warm water, apply cleaning solution liberally, but do not flood. Allow solution to set for approximately five minutes, then agitate the solution with a buffing machine or automatic scrubber. Remove soiled solution with a mop or wet vac. Damp mop with clean water and allow to dry.

Diluted Tops may also be applied using an automatic scrubber equipped with red or white scrubbing pads for routine maintenance with light soil or blue scrubbing pads for heavier soils. Floors can be cleaned by applying diluted solution, scrubbing and vacuuming up soiled solution in one easy operation.



Step 3 - Increase Finish Gloss, Durability And Slip Resistance With Balance

1. Sweep or dry mop floor to remove any dirt or soil.
2. To obtain optimum results, heavily soiled floors should be cleaned with Super Blue, all purpose cleaner, prior to applying Balance.
3. Apply Balance (undiluted) in a very thin coat. Applying too much Balance will make burnishing more difficult and waste product. One gallon of Balance will cover 4000-5000 square feet of flooring.
4. Allow floor to dry.
(Note: Floor may appear hazy at this time)
5. Burnish Balance using a 1000 RPM or faster burnishing machine with a Balance Applicator pad, passing over the finish three times for maximum results. Higher Rpm burnishing equipment (2500+ Rpm) will provide faster and more positive results.

Maintenance of Balance

Once the floor has its initial treatment of Balance, floors should be kept clean by washing daily with Stand Up. Burnish the floor with the Balance Maintainer pad at least weekly. When your floors don't POP, simply reapply Balance to the worn area and burnish.

