

Gymnasium Floor Care

A High Gloss, Solvent-Based, Maintenance System For Gymnasium and Other Wood Floors

This maintenance system was formulated to provide an exceptional gloss and outstanding durability and performance on gymnasium and other high traffic wood floors. Easy application, rapid build and slip resistance that exceeds OSHA and ADA recommendations are additional advantages of this system.

Floor Preparation and Application Products

WATERLESS CLEANER

Solvent Based, Cleaner/Degreaser For Wood Floors

Waterless Cleaner is a solvent-based cleaner for wood and concrete surfaces. Waterless Cleaner does a great job when used to tack, clean and degrease flooring surfaces before applying polyurethanes or solvent-based finishes. Waterless Cleaner may also be used as a dust mop treatment or for damp mopping in the routine cleaning of wood and concrete surfaces. Waterless Cleaner is excellent at dissolving oils, grease, hydraulic fluid, and removing black heel and tire marks. Waterless Cleaner reduces the chances for darkening and raised grain on wood floors, which can happen with water-based cleaners.



Product #250

COAST-TO-COAST

350 Gram/Liter, VOC Compliant High Gloss, Gymnasium Finish

Coast-to-Coast offers the performance advantages of rapid build, reasonable dry time, superior durability and high gloss that are found in Perma's traditional polyurethane gym finishes, in a low VOC formulation. Coast-to-Coast is formulated for use on all interior residential, institutional and commercial wood floors. Coast-to-Coast's full body provides rapid film build that dries under normal conditions in approximately 7-9 hours to a hard, glossy finish that provides excellent resistance to abrasion, wearing, and chemicals. This product complies with Northeast Ozone Transport Commission's (OTC) more stringent 350 gram/liter VOC regulations.



Product #551



Perma Incorporated • 605 Springs Road, Bedford, MA 01730
Tel: (978) 667-5161 • Fax: (978) 670-5797
E-mail: info@perma.com • Website: www.perma.com

Gymnasium Floor Care

Floor Preparation and Application Procedures

Step 1- Screen or Sand, then Clean and Tack With Waterless Cleaner

FLOOR PREPARATION: If the composition or origin of an existing finish is unknown, it is strongly recommended that a test patch be applied to determine compatibility and adequate adhesion characteristics. Clean floor thoroughly with Waterless Cleaner using a treated dry mop, wet mop and bucket, or treated clean towels or rags. Allow the floor to dry, then screen with an 80-120 grit screen disk depending on the condition of the floor. Sanding is advisable for new floors and old, badly worn floors. Following screen disk or sanding, floors should be vacuumed or swept to remove the majority of the urethane or wood dust created during the procedure. Residual fine dust should be removed by tack ragging using clean towels, rags, or clean dry mop heads treated with Waterless Floor Cleaner. Apply enough Waterless Floor Cleaner to dampen the tacking media using a chemical resistant trigger sprayer, pump sprayer, or by pouring cleaner into a mop and wringer bucket, immersing and then wringing out excess.

Turn over, replace, or re-immers and wring out tacking media often, to avoid redepositing urethane and wood dust. Test to make sure dust has been removed by wiping your hand across the floor. If residual dust is observed, re-tack the floor surface.



Step 2- Coat With Coast-To-Coast

NOTE: To meet the new VOC regulations, the chemistry used to formulate 350 gram/liter urethane finishes presents some different performance characteristics than the 450 gram/liter finishes that many floor care professionals have been used to. The use of new VOC exempt solvents, increased concentrations of urethane resins and new drying systems, has resulted in finishes with higher solids content, increased body and different application and drying characteristics. The increased solids content and body of these finishes makes them apply thicker, so care must be taken to apply the thinnest coat possible. This requires the use of weighted drag bars or applying downward pressure to the handles of light weight bars, or more carefully spreading the finish when using lambswool, flock applicators or brushes. Heavy coats can result in the urethane drying at the surface, trapping solvent in the finish film and significantly increasing the curing time. Other factors that can substantially extend curing times are cold floor temperatures and high humidity conditions. Evidence of delayed drying includes increased scuffing, scratching and in severe situations movement and wrinkling of the urethane film.

If the composition or origin of an existing finish is unknown, it is strongly recommended that a test patch be applied to determine compatibility and adequate adhesion characteristics. Coast-To-Coast should not be applied to floors with a temperature lower than 65°F.

FLOOR PREPARATION: Sanding is advisable for new floors and old, badly worn floors. After sanding, sweep or vacuum the floor to remove wood dust and dirt, and then tack rag the floor using Waterless Cleaner.

SEALED FLOORS IN GOOD CONDITION: Clean heavily soiled floors thoroughly with #255 Wood Glow or #250 Waterless Cleaner. Allow the floor to dry, then screen with an 100-120 grit screen disk. Wet screening using a solution of #255 Wood Glow diluted 4 ounces per gallon of water, will reduce dusting and clean the floor. Floors may also be dry screened. Dry screening can be more effective at removing deeper scratches and heavy oxidation. Thoroughly sweep or vacuum the floor to remove wood dust and dirt. Tack rag the floor with Waterless Cleaner to remove any fine dirt or dust left from screening.

APPLYING THE FINISH: Apply finish only after floor is thoroughly clean and dry. Apply finish with a lamb's wool applicator, brush or drag/t-bar. Pour finish into an applicator pan if applying with a lamb's wool or brush, or a plastic watering can for application with a drag/t-bar. Apply finish in a **thin**, uniform coat. Generally, one coat is sufficient to provide a positive appearance and performance in recoating procedures. Under warm, low humidity conditions allow approximately 12-16 hours between coats. Cold floor temperatures or high humidity can significantly increase drying time. Apply no more than 2 coats in one day. Under warm, low humidity conditions, floors may be opened to light traffic after 72 hours. Adverse drying conditions will extend the amount of time necessary before opening the floor to traffic.

BUFFING BETWEEN COATS: Floors may be screened between coats with a 120 grit or finer screen to ensure adhesion and to remove raised grains in wood and provide a smoother finished appearance. Sweep or vacuum the floor to remove large quantities of wood and urethane dust. Tack rag floor with Waterless Cleaner to remove fine dust. Allow floor to dry thoroughly, then apply the next coat.



Perma Incorporated • 605 Springs Road, Bedford, MA 01730

Tel: (978) 667-5161 • Fax: (978) 670-5797

E-mail: info@perma.com • Website: www.perma.com

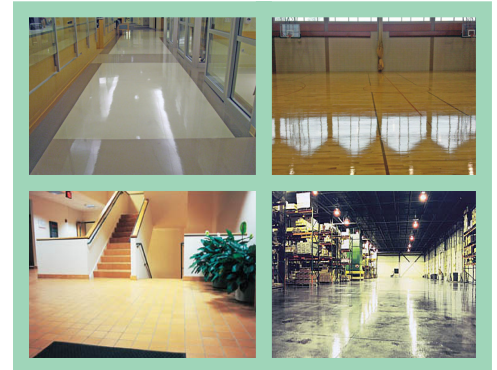
Gymnasium Floor Care

Cleaning and Maintenance Products

AQUA-TREAT

Multi-Purpose, Water-Based, Dry Mop Treatment

Aqua Treat is a special water-based formulation for treating dust mops and cloths. Unlike oil-based treatments which can leave a film and cause separation, mottling, or adhesion problems with many floor coatings, Aqua Treat is 100% compatible with all modern floor-finishing materials. Aqua Treat will quickly penetrate dust mops and cloths, providing extended dust- and dirt-retention capabilities. Aqua Treat and soils can be easily removed from dry mops and cloths simply by washing with detergent and water. Aqua Treat may be safely used on asphalt, vinyl, asbestos, linoleum, terrazzo, marble, ceramic tile, sealed wood and concrete floors. Aqua Treat is nontoxic, nonflammable, noncorrosive, and biodegradable.



Product #135

BURN OUT

Water-Based Scuff And Black Mark Remover

Changes in sports footwear sole composition and gymnasium activities have resulted in a substantial increase in surface and burned in scuff marks. Scuff marks that previously could be removed simply by rubbing gently with a cloth or buffing pad are now virtually bonded to the floor. Scrubbing with more aggressive pads can scratch and degrade finish gloss levels. When used according to directions, Burn Out solubilizes and loosens embedded scuff marks making them much easier to remove.

Burn Out can be safely used on most synthetic sports flooring, solvent-based and water-based wood and concrete finishes, and ceramic tile, but should be tested for compatibility prior to use. Burn Out should not be used on resilient tile finishes.

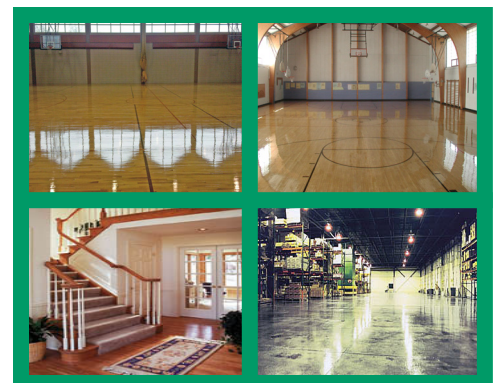


Product #185

WOOD GLOW

Water Based, Cleaner/Degreaser And Prep For Wood Floors

Wood Glow is a safe versatile cleaner that effectively removes food & protein based soils, grease, body oils, scuffs, and black heel marks from sealed wood surfaces without dulling the gloss. Utilizing different dilution ratios, Wood Glow can be used as a pre-finish-treatment when recoating gymnasium or other wood floors, as a cleaner and degreaser in routine maintenance programs or full strength for spot cleaning heavily soiled or greasy areas. Wood Glow quickly evaporates and will not dull, haze or streak the floor, and no rinsing is required. Ideal for use on gymnasium and commercial wood floors in restaurants, dining areas, retail stores and other areas where heavy soil loads make maintenance a challenge.



Product #255

Gymnasium Floor Care

Cleaning and Maintenance Procedures

Step 1- Dry Mop With A Mop Treated With Aqua Treat

Apply mop treatment to a clean mop at approximately one ounce per eight ounces of mop weight. Do not use this product on mops previously treated with oil-based mop treatments. Allow the mop to stand overnight before using it on floors. Shake mop thoroughly after use to dislodge loose dirt, and retreat as necessary. When a mop becomes dirty simply wash it with warm water and detergent, allow it to dry thoroughly and retreat it.



Step 2-Remove Embedded Scuffs and Black Marks with Burn Out

Embedded Black Mark And Scuff Removal: Apply Burn Out full strength to embedded scuff marks using a chemical resistant trigger sprayer. Allow Burn Out to work for a few minutes. Remove scuff marks by scrubbing with a soft cleaning pad (red or blue). Wipe off with a clean cloth or towel.

Removing Scuffs And Black Marks From Larger Areas: Dilute Burn Out 1:1 with cold water. Wet approximately a 50 ft² area using mop, lambswool or other applicator. Allow Burn Out to work for a few minutes then scrub area with a low speed buffing machine and soft cleaning pad. Remove soiled solution with a wet vacuum or clean mop.

NOTE: Durability and chemical resistance varies with different finishes. Care should be taken not to apply excessive pressure or use aggressive scrubbing pads to avoid scratching or reducing the gloss of finishes. It is advisable to test Burn Out on existing finishes in a small, unobtrusive area to verify compatibility.



Step 3- Clean And Remove Screening Dust With Wood Glow

Wood Glow may be diluted from 2-4 ounces per gallon of water for cleaning light soil conditions and up to 12 ounces per gallon for heavy soil conditions. Wood Glow may also be used full strength for cleaning petroleum based oils, grease or food stains. **NOTE:** When used full strength Wood Glow may effect some water-based wood finishes so it should be tested in an inconspicuous area before use.

Wood Glow may also be used at 8 ounces per gallon in an autoscrubber equipped with a 3M Scotch Brite Type A, maroon pad or with a mop & bucket and 175-300 Rpm buffing machine to prepare water-based urethanes for recoating. It may also be used with an automatic scrubber or mop and bucket as a tacking solution to clean floors after dry screening.

Wood Glow may be applied by spraying on and then wiping off with a clean cotton cloth, or diluted in a wringer bucket and used for damp mopping with a good quality, cotton or micro-fiber mop. Wood Glow evaporates completely so no rinsing is required.

***Please note** using a green scrubbing pad on painted surfaces can remove the gloss or damage the paint.



Perma Incorporated • 605 Springs Road, Bedford, MA 01730

Tel: (978) 667-5161 • Fax: (978) 670-5797

E-mail: info@perma.com • Website: www.perma.com