

# Wood Floor Care

## A High Gloss, Water-Based Maintenance System For Gymnasium and Wood Floors

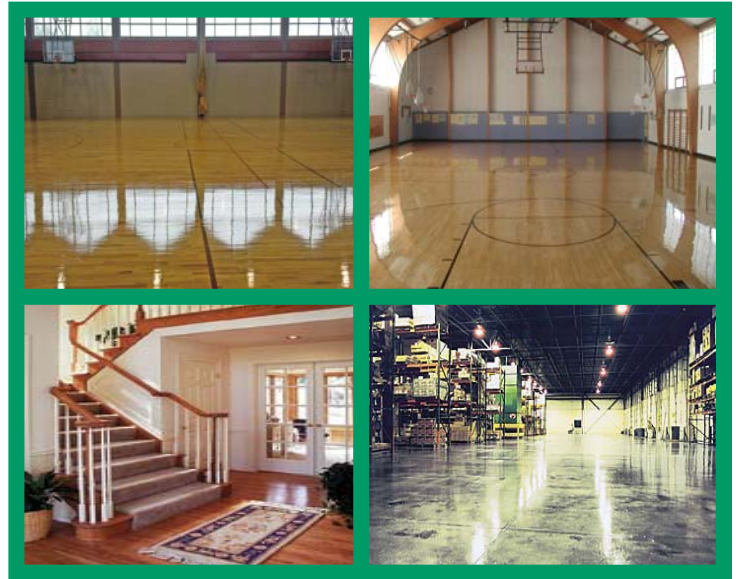
More and more facilities are utilizing water-based urethane coatings for gym floors. Water-based urethanes have the advantage of very low odor, easy application, fast dry times, great durability and high gloss.

### Floor Preparation and Application Products

## WOOD GLOW

### Water Based, Cleaner/Degreaser And Prep For Wood Floors

Wood Glow is a safe versatile cleaner that effectively removes food & protein based soils, grease, body oils, scuffs, and black heel marks from sealed wood surfaces without dulling the gloss. Various solutions with different dilutions are possible with Wood Glow use as a pre-finish-treatment during the finishing or re-coating process, use as part of a scheduled maintenance program, or as a spot cleaner. Wood Glow quickly evaporates and will not dull, haze or streak the floor, and no rinse is required. Ideal for use on commercial wood floors in restaurants, dining areas, retail stores, sports facilities and other areas where heavy soil loads make maintenance a challenge.



Product #255

## HYDROTHANE HT

### High Gloss, Water Based, Oil Modified Urethane Wood Finish For Gymnasiums And Other High Traffic Floors

Hydrothane HT provides outstanding durability and gloss in an easy to apply, low odor, low VOC finish. Hydrothane HT is formulated for use on gymnasium and other high traffic areas like restaurants, retail stores, shopping malls, and office buildings. Hydrothane HT's single part formulation provides comparable durability to two part, crosslinked finishes without the risk of catalyzing to much material that would have to be discarded. Hydrothane HT's low odor formulation is a pleasure to work with, levels well, builds quickly and dries in approximately two hours. Hydrothane HT is non-flammable, and utilizes green chemistry and has a low VOC content of 150 grams/liter.



Product #561



Perma Incorporated • 605 Springs Road, Bedford, MA 01730

Tel: (978) 667-5161 • Fax: (978) 670-5797

E-mail: [info@perma.com](mailto:info@perma.com) • Website: [www.perma.com](http://www.perma.com)

# Wood Floor Care

## Floor Preparation and Application Procedures

### Step 1- Clean and Tack with Wood Glow

**Wood Glow** may be diluted from 2-4 ounces per gallon of water for cleaning light soil conditions and up to 12 ounces per gallon for heavy soil conditions. Wood Glow may also be used full strength for cleaning petroleum based oils, grease or food stains. NOTE: When used full strength Wood Glow may effect some water-based wood finishes so it should be tested in an inconspicuous area before use.

**Wood Glow** may also be used at 8 ounces per gallon in an autoscrubber equipped with a 3M Scotch Brite Type A, maroon pad or with a mop & bucket and 175-300 Rpm buffing machine to prepare water-based urethanes for recoating. It may also be used with an automatic scrubber or mop and bucket as a tacking solution to clean floors after dry screening.

**Wood Glow** may be applied by spraying on and then wiping off with a clean cotton cloth, or diluted in a wringer bucket and used for damp mopping with a good quality, cotton or micro-fiber mop.

**Wood Glow** evaporates completely so no rinsing is required.



### Step 2- Coat With Hydrothane HT

**NOTE:** If the composition or origin of an existing finish is unknown, it is strongly recommended that a test patch be applied to determine compatibility and adequate adhesion characteristics. Do not apply Hydrothane HT if the floor temperature is lower than 60° F.

**Approximate Coverage: 650-800 ft<sup>2</sup>/Gallon.**

**FLOOR PREPARATION:** Sanding is advisable for new floors and old, badly worn floors. After sanding, sweep or vacuum the floor, and then lightly damp mop with #255 Wood Glow Cleaner. Avoid wet mopping or flooding unsealed wood surfaces as darkening or raising of the grain may result.

**SEALED FLOORS IN GOOD CONDITION:** Clean floor thoroughly by damp mopping or push mopping using a solution of #255 Wood Glow Cleaner diluted per the label instructions. Heavily soiled floors should be scrubbing using a 175-350 Rpm buffing machine or automatic scrubber equipped with a red pad. Remove the soiled solution with a wet vacuum or mop. Allow the floor to dry. If Hydrothane HT is being applied over a solvent-based finish or competitors water-based finish, the floor should be screened using a 100-120 grit screen disk, to remove any existing gloss and allow for better finish adhesion. If Hydrothane HT is being applied over a Perma water-based wood finish the floor may be prepared using a 120-140 grit screen disk or a Surface Preparation Pad. Floors may be wet buffed using a solution of #255 Wood Glow and an automatic scrubber or 175-350 Rpm buffing machine or dry buffed. After buffing damp mop the floor with Wood Glow to remove any dirt or dust left from buffing.

**APPLYING THE FINISH:** Apply finish only after floor is thoroughly clean and dry. Apply Hydrothane HT to the floor using a water can or other appropriate device and spread it with a foam flock applicator or T/Drag Bar in a thin, even coat.

**APPLYING ADDITIONAL COATS:** Although it is not necessary to buff floors to obtain adequate adhesion, buffing will provide the optimum gloss and final finish appearance. When the first coat is completely dry, the floor may be buffed lightly with a floor pad, or fine screen disk. Sweep or vacuum the floor, then damp mop with Wood Glow. Apply any markings, allow to dry and buff. Apply the second coat and buff when dry. Sweep or vacuum carefully, buff surface again and apply a third coat.

**MAINTENANCE:** Floors should be dry mopped using mops treated with Aqua Treat Mop Treatment daily. Floors should be damp mopped or washed with an automatic scrubber regularly with Wood Glow to remove fine dust and soil not removed by dry mopping or vacuuming.



Perma Incorporated • 605 Springs Road, Bedford, MA 01730

Tel: (978) 667-5161 • Fax: (978) 670-5797

E-mail: [info@perma.com](mailto:info@perma.com) • Website: [www.perma.com](http://www.perma.com)

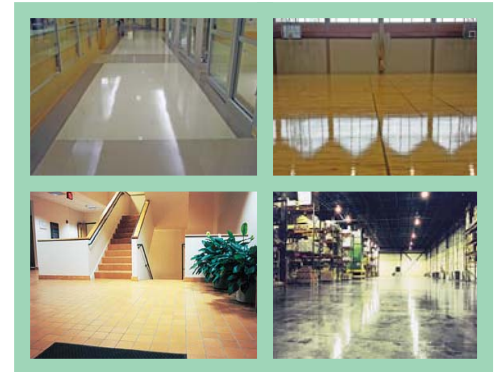
# Wood Floor Care

## Cleaning and Maintenance Products

### AQUA-TREAT

#### Multi-Purpose, Water-Based, Dry Mop Treatment

Aqua Treat is a special water-based formulation for treating dust mops and cloths. Unlike oil-based treatments which can leave a film and cause separation, mottling, or adhesion problems with many floor coatings, Aqua Treat is 100% compatible with all modern floor-finishing materials. Aqua Treat will quickly penetrate dust mops and cloths, providing extended dust- and dirt-retention capabilities. Aqua Treat and soils can be easily removed from dry mops and cloths simply by washing with detergent and water. Aqua Treat may be safely used on asphalt, vinyl, asbestos, linoleum, terrazzo, marble, ceramic tile, sealed wood and concrete floors. Aqua Treat is nontoxic, nonflammable, noncorrosive, and biodegradable.



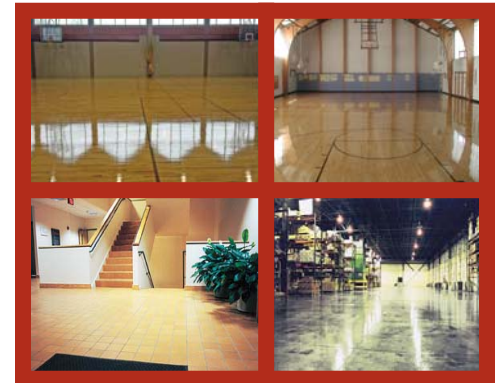
Product #135

### BURN OUT

#### Water-Based Scuff And Black Mark Remover

Changes in sports footwear sole composition and gymnasium activities have resulted in a substantial increase in surface and burned in scuff marks. Scuff marks that previously could be removed simply by rubbing gently with a cloth or buffing pad are now virtually bonded to the floor. Scrubbing with more aggressive pads can scratch and degrade finish gloss levels. When used according to directions, Burn Out solubilizes and loosens embedded scuff marks making them much easier to remove.

Burn Out can be safely used on most synthetic sports flooring, solvent-based and water-based wood and concrete finishes, and ceramic tile, but should be tested for compatibility prior to use. Burn Out should not be used on resilient tile finishes.

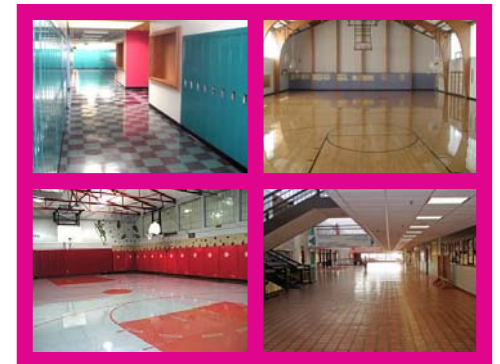


Product #185

### TOPS

#### Premium Quality, Neutral Cleaner & Damp Mop

A highly effective, yet gentle, synthetic detergent concentrate, formulated for use in professional floorcare programs on all types of flooring surfaces including resilient tile, ceramic tiles, marble, terrazzo, synthetic gym flooring, sealed wood, cork, and as a general purpose cleaner. Strong enough to remove stubborn soil, it will not degrade or dull existing floor finishes. Chelating and sequestering agents neutralize and suspend troublesome salt and ice melters. When used to clean surfaces prior to recoating, with resilient tile or water-based wood floor finishes, Tops Neutral Cleaner reduces surface tension and neutralizes floor surfaces, allowing for better finish performance by assuring the floor meets acceptable pH parameters. This product also delivers superior performance as a general purpose cleaner for wall tiles, porcelain, plastics, chromium, and stainless steel.



Product #127



Perma Incorporated • 605 Springs Road, Bedford, MA 01730  
Tel: (978) 667-5161 • Fax: (978) 670-5797  
E-mail: [info@perma.com](mailto:info@perma.com) • Website: [www.perma.com](http://www.perma.com)

# Wood Floor Care

## Cleaning and Maintenance Procedures

### Step 1- Dry Mop With A Mop Treated With Aqua Treat

Apply mop treatment to a clean mop at approximately one ounce per eight ounces of mop weight. Do not use this product on mops previously treated with oil-based mop treatments. Allow the mop to stand overnight before using it on floors. Shake mop thoroughly after use to dislodge loose dirt, and retreat as necessary. When a mop becomes dirty simply wash it with warm water and detergent, allow it to dry thoroughly and retreat it.



### Step 2-Remove Embedded Scuffs and Black Marks with Burn Out

**Embedded Black Mark And Scuff Removal:** Apply Burn Out full strength to embedded scuff marks using a chemical resistant trigger sprayer. Allow Burn Out to work for a few minutes. Remove scuff marks by scrubbing with a soft cleaning pad (red or blue). Wipe off with a clean cloth or towel.

**Removing Scuffs And Black Marks From Larger Areas:** Dilute Burn Out 1:1 with cold water. Wet approximately a 50 ft<sup>2</sup> area using mop, lambswool or other applicator. Allow Burn Out to work for a few minutes then scrub area with a low speed buffing machine and soft cleaning pad. Remove soiled solution with a wet vacuum or clean mop.

**NOTE:** Durability and chemical resistance varies with different finishes. Care should be taken not to apply excessive pressure or use aggressive scrubbing pads to avoid scratching or reducing the gloss of finishes. It is advisable to test Burn Out on existing finishes in a small, unobtrusive area to verify compatibility.



### Step 3-Clean With Tops Neutral Cleaner

For daily damp mopping, mix 1 ounce of Tops Neutral Cleaner per gallon of warm water, and apply with an automatic scrubber equipped with red pads or using a cotton or micro-fiber mop and wringer bucket or applicator system.

For heavily soiled floors, mix 2-4 ounces per gallon of warm water, apply slightly more cleaning solution to suspend dirt and oily soils being careful not to over wet or flood the floor, or allow cleaning solution to seep between the wood planking or wet the wood. When using an automatic scrubber the solution may be applied, scrubbed and vacuumed up in one operation. A low speed scrubber equipped with red pads may also be used to agitate the solution. Soiled solution may be removed with a mop or wet vac.



Perma Incorporated • 605 Springs Road, Bedford, MA 01730  
Tel: (978) 667-5161 • Fax: (978) 670-5797  
E-mail: [info@perma.com](mailto:info@perma.com) • Website: [www.perma.com](http://www.perma.com)